

BASED ON A TRUE STORY



The poster depicts a dramatic scene at night. In the foreground, a motorcycle gang is riding on a road. The lead motorcycle has a skull mounted on its front. A man in a leather jacket with 'REVELATORS' and '86' on the back is prominently featured, holding a shotgun. Behind him, other gang members are visible, including a man with a long beard and another with sunglasses. In the background, a blue and white train with the number '1819' is moving towards the viewer. A large banner with the Union Jack and 'THE REVELATORS MC' is draped across the top. The sky is dark with a few helicopters and a bright, fiery glow on the horizon.

JOHN THE REVELATOR

“John is a righteous avenger, a man using revelation to justify vengeance”

LOGLINE

Inspired by the unsolved 1973 Kuranda Rail Motor train robbery, *John the Revelator* follows two orphaned brothers shaped by violence and the Vietnam War who rise to power as leaders of a motorcycle brotherhood in Far North Queensland — where loyalty, belief, and destiny collide in a world defined by power, myth, and inevitable betrayal.



SYNOPSIS

John the Revelator is a character-driven crime drama set against the untamed landscapes of Far North Queensland. It follows two orphaned brothers whose lives have been shaped by hardship, loyalty, and survival. After growing up in a brutal environment where they could only rely on each other, the brothers return home from the Vietnam War profoundly changed and searching for purpose. Together they establish a motorcycle brotherhood that quickly grows in influence across the region, becoming both a family and a source of power.

As the club expands, ambition, belief, and personal conviction begin to challenge the loyalty that once held them together. The legend of the unsolved 1973 Kuranda train robbery becomes intertwined with their rise, shaping the mythology surrounding the brotherhood and the men who lead it. **As tensions escalate and loyalties fracture, the brothers must confront the consequences of leadership, faith, and the fragile line between loyalty and betrayal.**



The Northern Suns MC

The Revelators MC



CHARACTERS

JOHN

John is a quiet, watchful man who keeps his emotions tightly guarded. Beneath his controlled exterior lies a deep loyalty and vulnerability that only surfaces in the presence of Shiho, where his hardened demeanour softens and glimpses of warmth appear. After her death, something inside him changes — the warmth fades, his silences grow longer, and his emotional distance deepens. By the final act, John becomes eerily calm, a stillness that masks the darkness within and makes him far more dangerous than anyone realises.

MEDUSA

Medusa is not a mystical character, but a woman shaped by intuition and quiet awareness. She observes more than she speaks, carrying the heavy burden of knowing what others refuse to see. Slightly removed from the world around her, she senses the currents beneath events before they surface. Her fear is restrained and inward, and when she speaks of what is coming, her prophecy carries no drama — only a quiet, resigned certainty.

ELIAS

Elias is not weaker than John — he is loyal, observant, and fiercely protective of the brotherhood they have built. While John carries the weight of leadership, Elias watches him closely, always aware of the shifts in his brother's silence and the consequences that may follow. His loyalty runs deep, but so does his understanding of the danger around them. In the final scene, a single nod from Elias says everything — acceptance, loyalty, and the unspoken bond that has defined their lives.

PSYCHO

President of The Northern Suns MC — not theatrical or volatile. He is controlled, grounded, and unwavering in his beliefs. Psycho doesn't see himself as a villain; in his mind, he is simply doing what must be done to protect his people and maintain order. His authority comes from conviction, not intimidation. That certainty is what makes him dangerous — a man who believes he is right rarely questions the consequences of his actions.

SHIHO

Shiho is small, but fierce. She is not fragile — she is grounded, perceptive, and emotionally intelligent. She understands the men around her better than they understand themselves, and her strength lies in quiet restraint rather than force. Shiho brings balance to John's guarded world, offering clarity and calm where others bring conflict. When her death comes, she meets it without fear or melodrama — only with acceptance, and love.

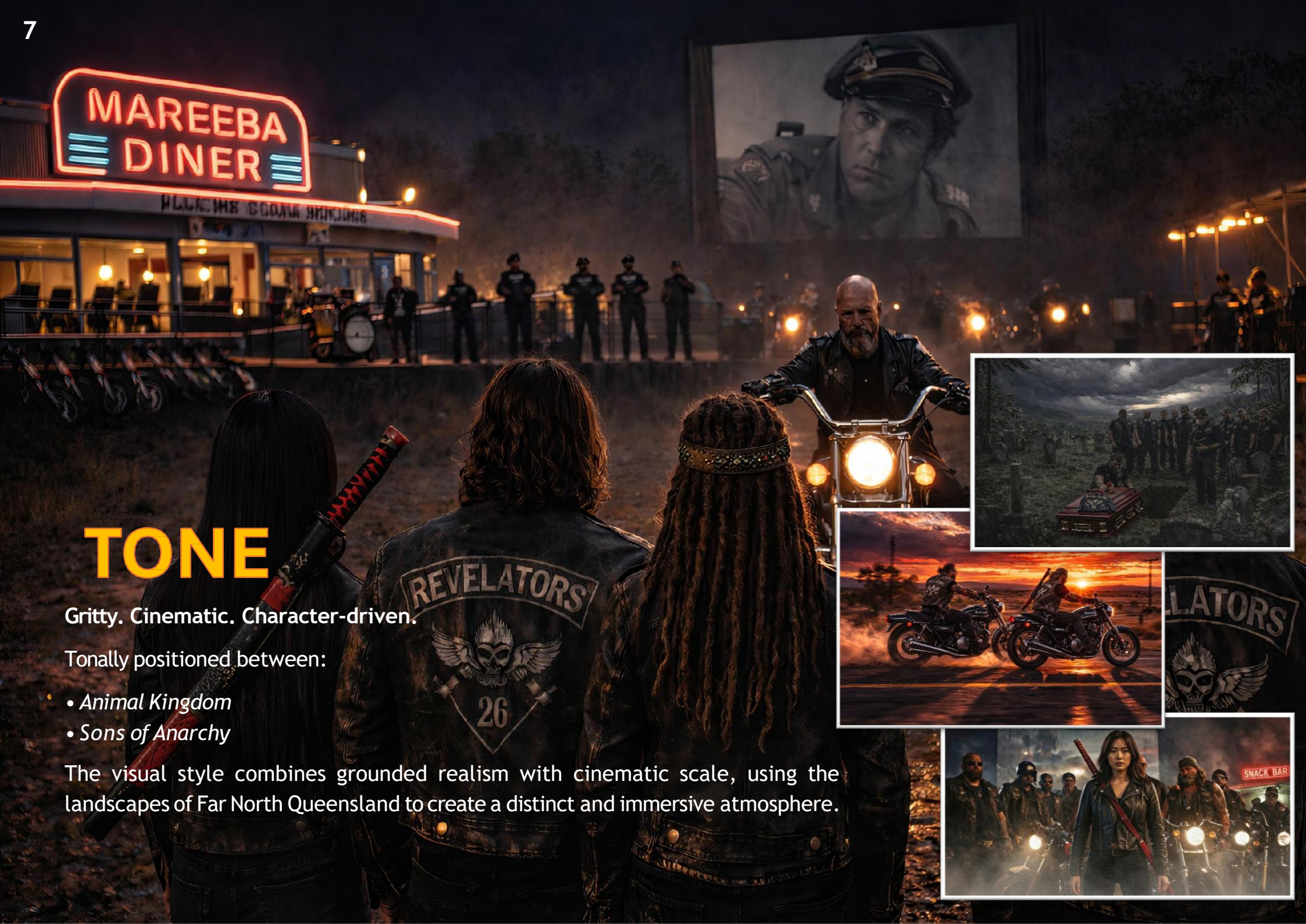
JET

Jet is quiet, controlled, and never emotional. He speaks little and never raises his voice, moving through the world with the calm certainty of someone who already knows how things will end. The chaos around him seems to irritate him more than threaten him. His stillness carries an unsettling weight — a quiet menace that makes others uneasy. Jet almost feels supernatural in his composure, though nothing about him is beyond human.



THEMES

- **Brotherhood & Loyalty** - Two brothers bound by hardship and survival form a motorcycle brotherhood that becomes both family and power.
- **War & Identity** - Returning from the Vietnam War, they struggle to find purpose in a world that no longer feels familiar.
- **Power & Influence** - As the club grows, ambition and belief begin to fracture the loyalty that once held the brothers together.
- **Myth & Legacy** - The legend of the unsolved Kuranda train robbery becomes intertwined with their rise, shaping the mythology surrounding the brotherhood.
- **Leadership & Consequence** - As power consolidates and tensions escalate, the brothers must confront the cost of leadership, belief, and betrayal.



7 TONE

Gritty. Cinematic. Character-driven.

Tonally positioned between:

- *Animal Kingdom*
- *Sons of Anarchy*

The visual style combines grounded realism with cinematic scale, using the landscapes of Far North Queensland to create a distinct and immersive atmosphere.



TARGET AUDIENCE

Primary Audience

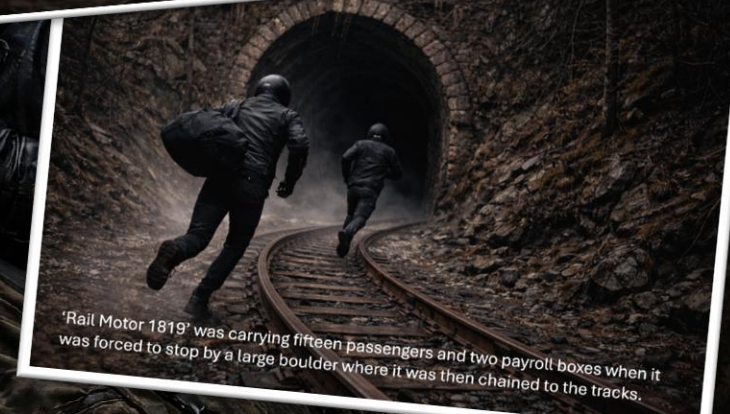
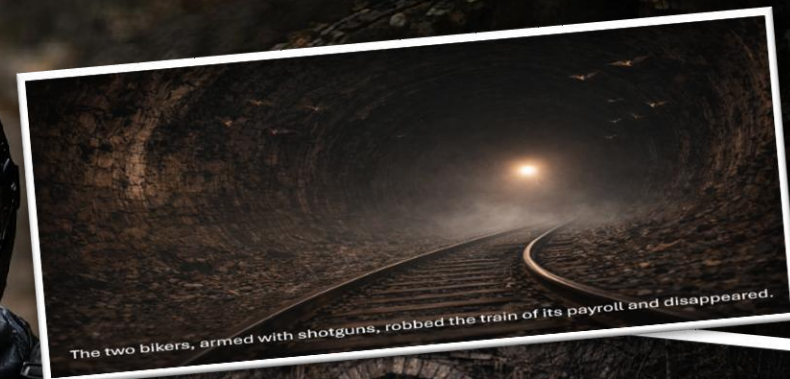
- Fans of character-driven, true crime drama
- Streaming audiences seeking premium, relatable genre storytelling
- Motorcycle culture has 10M + engaged global followers

Secondary Audience

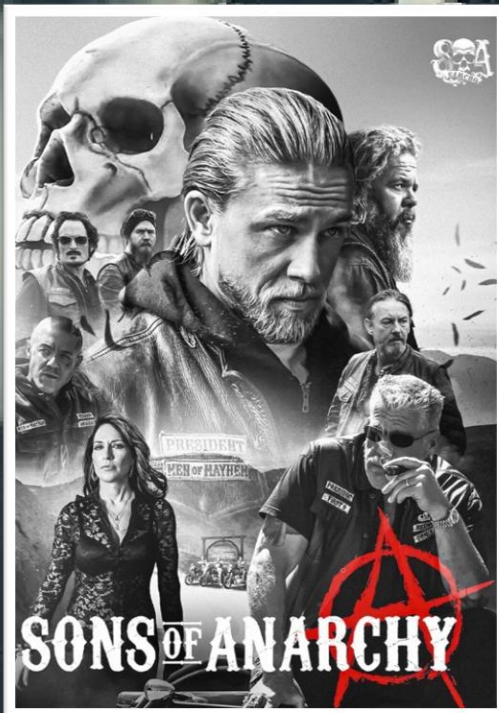
- International markets with strong interest in crime and outlaw narratives
- Crime drama remains one of the most exportable genres worldwide

John the Revelator is positioned for:

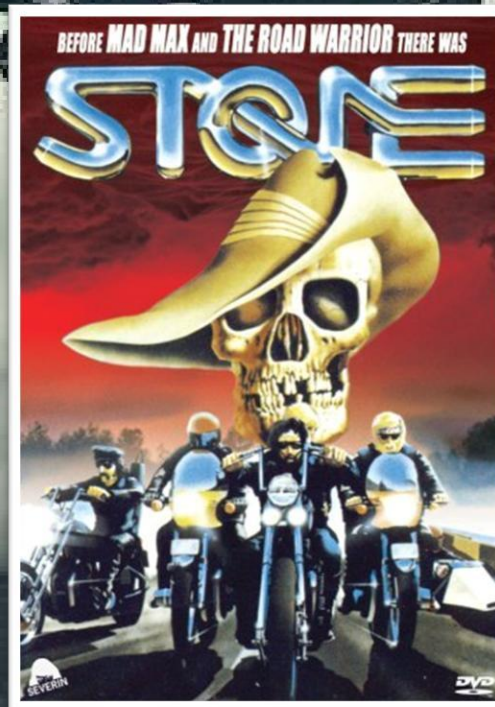
- Domestic launch
- Australian, U.S. and UK streaming markets
- International sales
- Multi-territory appeal



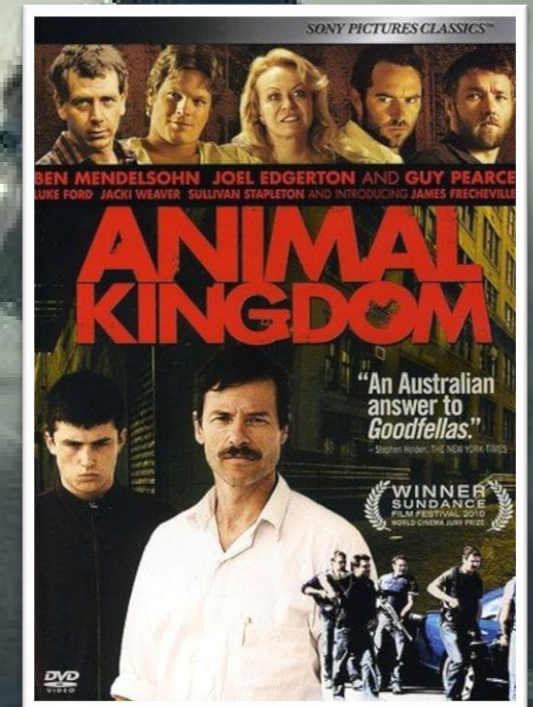
COMPARISONS



“An outlaw family where power and loyalty collide.”



“An undercover cop enters a brotherhood where loyalty rides deeper than the law.”



“Power, loyalty, and the violence that binds a family together.”

DIRECTORS VISION

John the Revelator represents an opportunity to showcase a distinctly Australian crime story with global appeal, delivering cinematic storytelling with the scale, tension, and impact audiences associate with premium international productions.

The proof-of-concept short film will serve as a strategic development asset, enabling investors, distributors, and industry partners to clearly visualise the tone, visual identity, and production capability of the feature film.

By demonstrating the cinematic potential of the project, the proof film will help unlock the pathway toward full feature production.

CONTACT INFORMATION

DANIAL DONAI

Writer | Director | Producer



danial@silverfoxfilms.net



+61 0468 300 423



<https://www.silverfoxfilms.net/>



**SILVERFOX
FILMS**
AUSTRALIA

Special Thanks to our Sponsors

Blackmagicdesign

